



THÉÂTRE DE LA MASSUE
CIE ÉZÉQUIEL GARCIA-ROMEU

Le Petit Théâtre du Bout du Monde – Opus II

TECHNICAL RIDER

Update May 2024

CONTACTS

Thierry Hett	Technical manager	+33 6 61 70 86 82	thierryhett@gmail.com
Ezéquier Garcia-Romeu	Director	+33 6 49 42 49 33	ezequier.r723@gmail.com
Théo Vodenitcharov	Prod	+33 6 03 65 26 37	theodore@ezequier-garcia-romeu.com

STAGE / SET

The set consists of:

1 main platform (wood frames + 25 plywood sheets 250cm x 122cm x 3mm each)
Dimensions L=11m20 x l=5m30 x H=80cm to 1m80

2 shelves
Dimensions L = 2m x H=2m20 x P=80cm

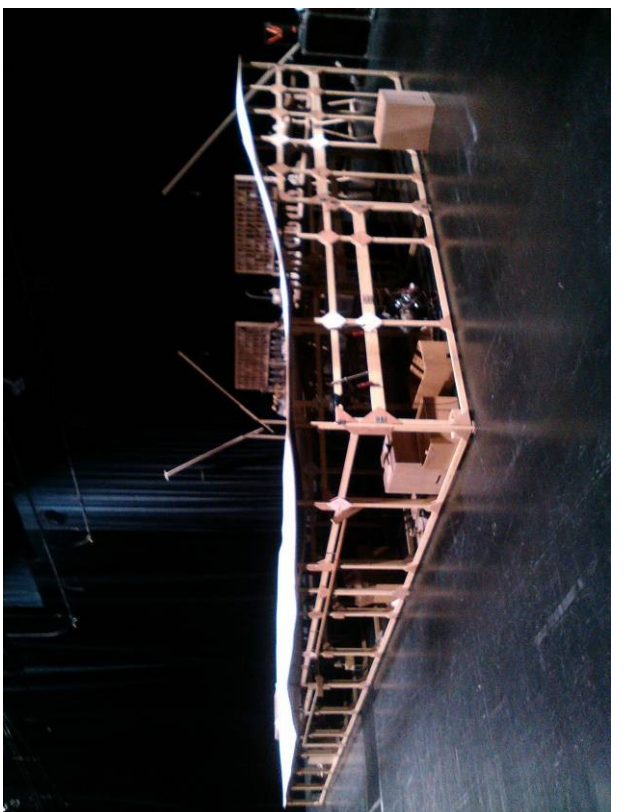
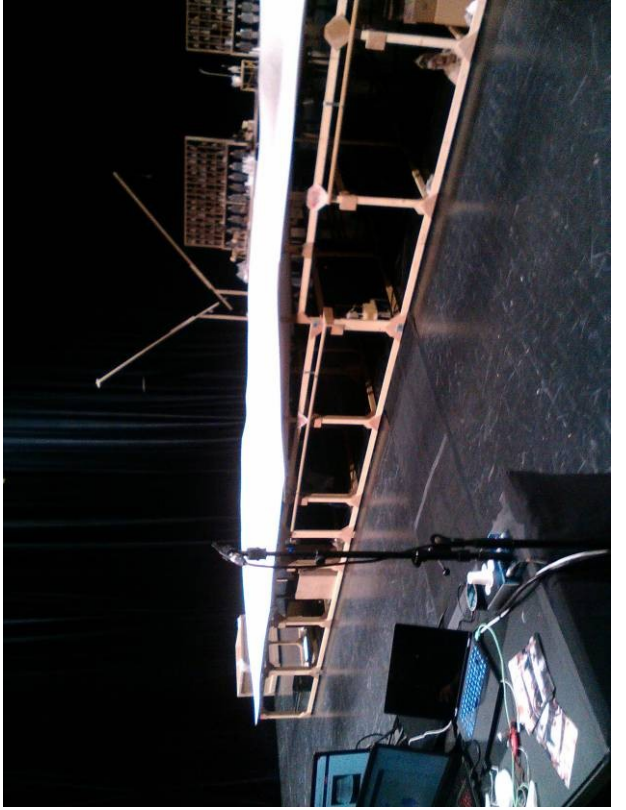
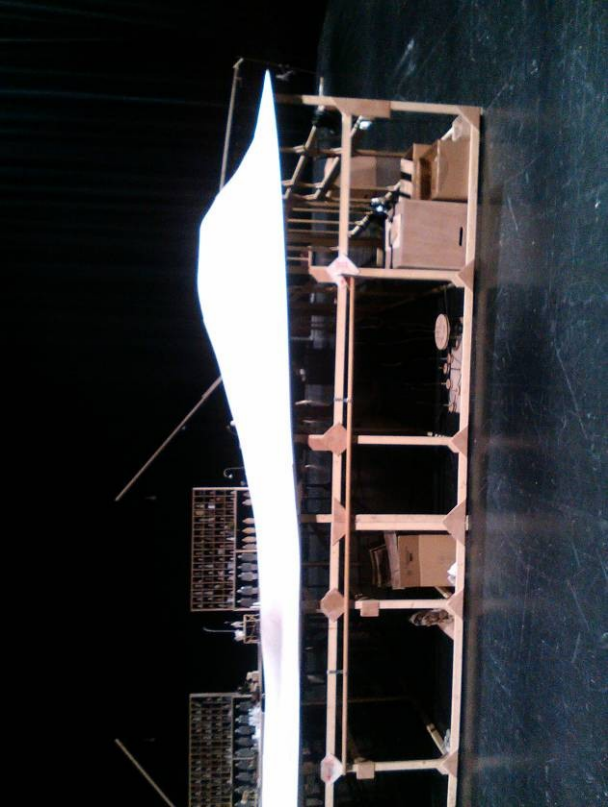
5 rods on wheels

2 wood cases on wheels
Dimensions 1m x 1m x 80cm

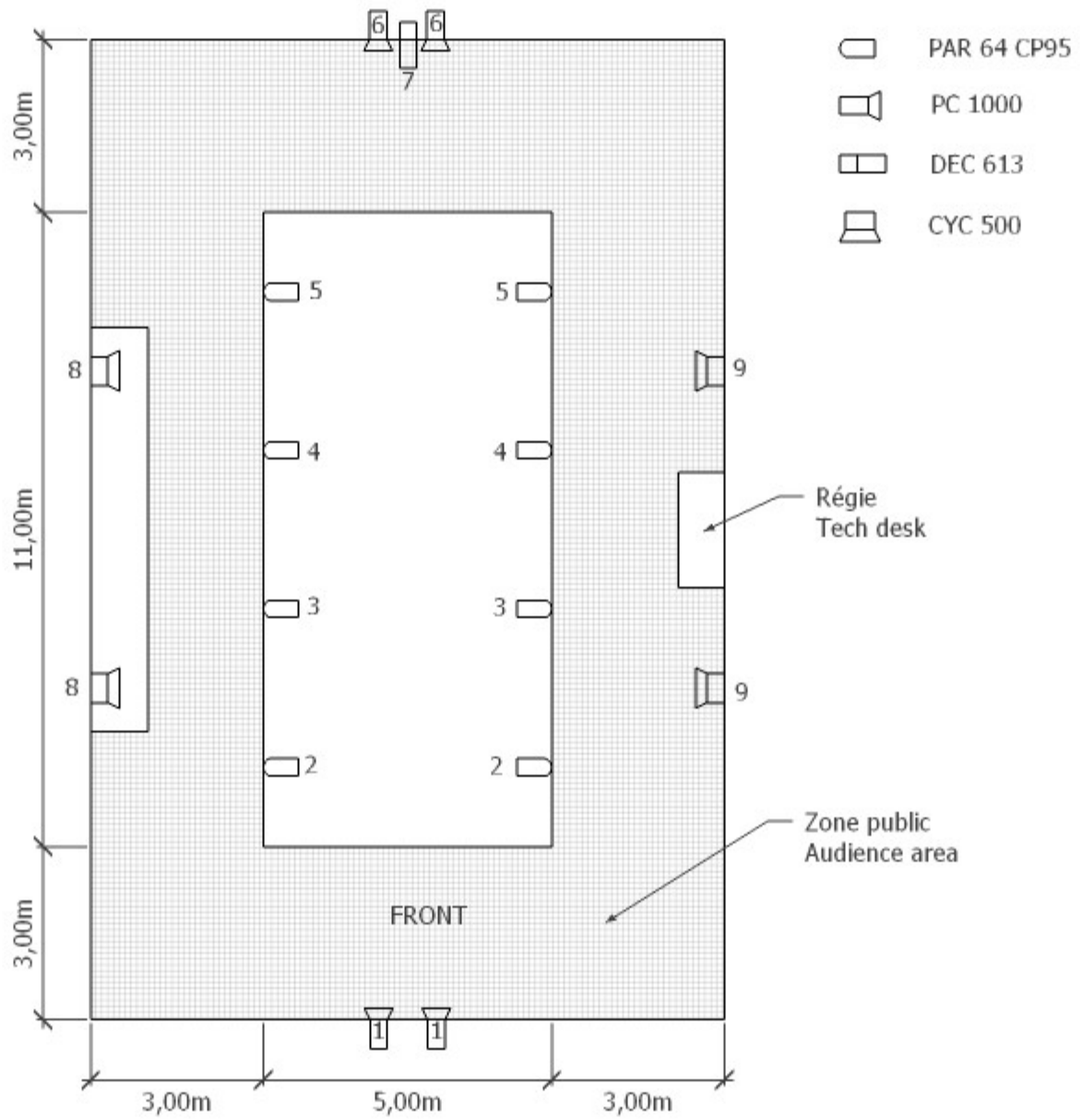
The audience must be able to walk around the set
Technical control desk on stage left (please provide a table + chair)
Minimal surface required: L=15m x l=10m
Height required for lights bars = 5m
Gross floor

POWER SUPPLIES

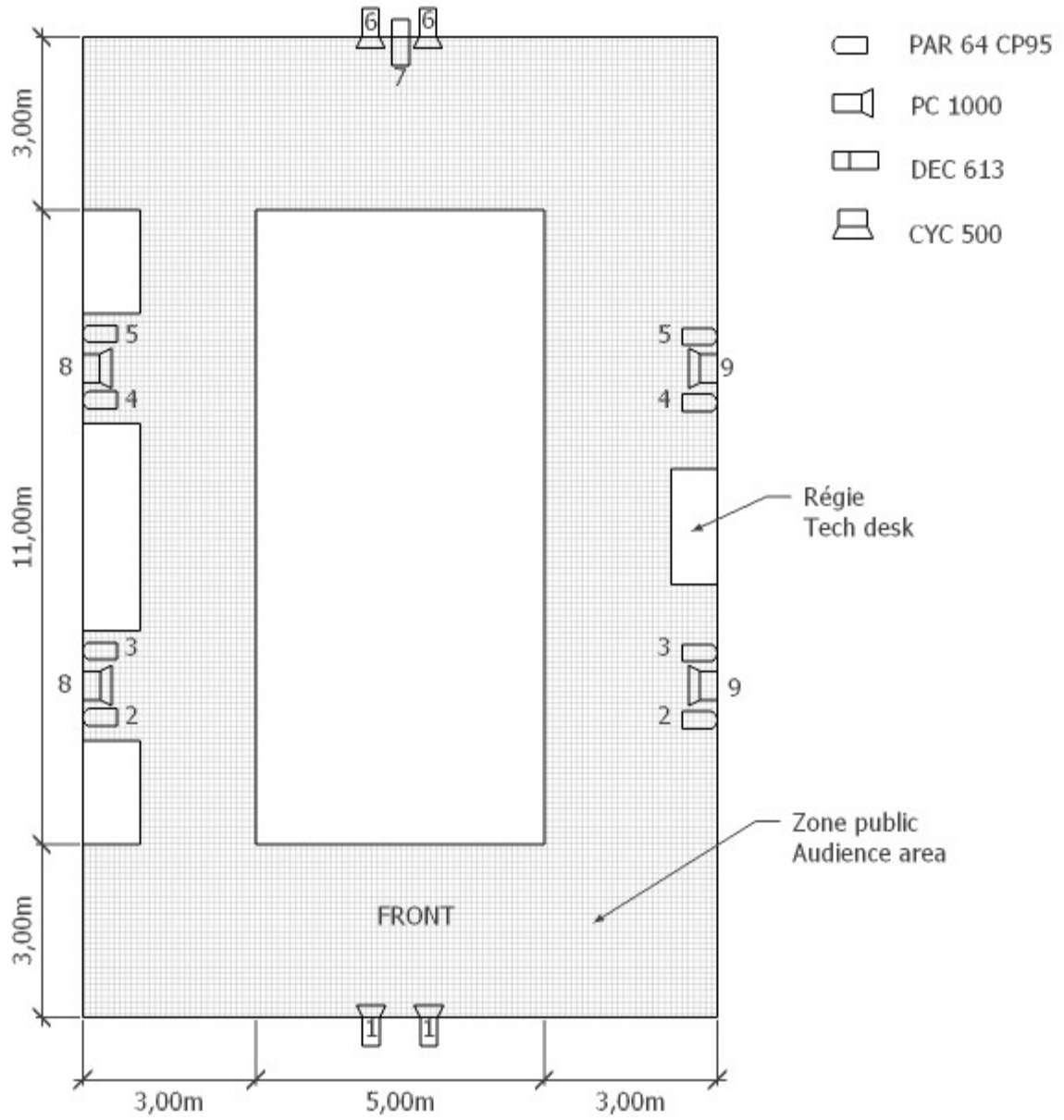
- 1 x dimmer 12 x 3kw
- 1 x direct 16A power supply with strips on stage left
- 1 x direct 16A power supply with strips on stage right
- 1 x direct 16A power supply with strips on wings (batteries charger)



LIGHT PLOT
Grid version
Trim height = 5m



LIGHT PLOT
Lift stands version
(6 x lift stands H=4m)



LIGHTING

Lighting equipment to provide:

Type	Specifications	Amount	Location
Dimmer 12 x 3kW		1	
DMX 12 channels manual lightin desk		1	Stage left
PAR 64 CP95	Gel 201 + frost	8	Grid
FLOOD LIGHT / CYC LIGHT 500W		6	Grid
PC 1000W	Gel 201	4	Grid
PROFILE type JULIAT 613 1000W	Gel 201	1	Grid
Extension cables 10/16A	10m et 5m	As needed	
Strips		As needed	

SOUND

Except in exceptional cases (international tour) the company provides its own sound equipment

Patch

IN	Sources	DI	+ 48V	PAD	Gain
1	Piezo charbon	YES	YES	NO	9h
2					
3	Static Mic	NO	YES	NO	9h
4	Piezo administrateur	YES	YES	NO	9h

OUT	Ampli	Diffusion
1	Active speaker Behringer B208D	A (Face Jardin)
2	Active speaker Behringer B208D	B (Lointain Jardin)
3	Active speaker Behringer B208D	C (Face Cour)
4	Active speaker Behringer B208D	D (Lointain Cour)
5	Active speaker Behringer B208D	E (Milieu Jardin)
6	Active speaker Behringer B208DD	F (Milieu Cour)
7	SUB HK Lucas Smart	SUB
8	Miniature active speaker	Cosmonaute
9	T-Amp CH1	Monacor Speaker
10	T-Amp CH2	Homemade Peron speaker
11	Miniature active speaker	Chiens

OTHERS

Using of lighting and motors with 12V batteries

Using of radio control system 2.4 Ghz

Please provide :

- 2 x dressing rooms with shower and toilet.
- Washing costume if more than one performance.

Consumables to provide:

Type	Amount
Gaffer / Tape	2
Batteries AAA	12
Batteries AA	12

SETTING UP & DISMANTLING SCHEDULE

Object	Staff to provide	Duration
Light pre-set		
Unloading Setting up Light focus	1 light manager 2 machinists	2 x 4h
Rehearsal	1 stage manager	4h
Dismantling Loading	2 machinists	4h
Costume washing	1 dresser	

VEHICLE / ACCESS

1 truck (3.5T)

Please inform us in case of difficult access and provide a truck park nearby the theater.